

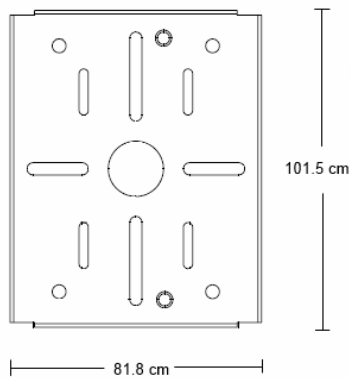


Secure Bracket Mounting Guide

This *Mounting Guide* provides step-by-step instructions on how to mount a Ruckus Wireless ZoneFlex access point (AP) to a flat surface or pole. The customer-ordered Ruckus Wireless secure mounting bracket kit (ordering part number 902-0120-0000) includes a metal mounting bracket and provides greater security when attaching the AP to flat surfaces (walls and ceilings) and to poles.

The 902-0120-0000 mounting kit can be used with the ZoneFlex R710 and other APs.

Figure 1: Secure bracket



BEFORE YOU BEGIN

Before deploying Ruckus Wireless products, please check for the latest released user documentation.

- Mounting Guides, User Guides and Release Notes are available at <http://support.ruckuswireless.com/documents>
- Software Upgrades are available at <http://support.ruckuswireless.com/software>
- Open Source information is available at <http://opensource.ruckuswireless.com>
- Software License and Limited Warranty available at <http://support.ruckuswireless.com/warranty>

PACKAGE CONTENTS

- One mounting bracket
- Four wood screw and wall anchor sets
- This *Mounting Guide*

REQUIRED HARDWARE AND TOOLS

- One Ruckus Wireless AP
- If you are mounting the AP on a flat surface using the secure bracket kit, then you need an electric drill with 4.75mm (3/16") drill bits
- If you are mounting the AP on a pipe or pole using the secure mounting bracket kit, then you will also need a 38.1mm to 63.5mm (1.5" to 2.5") pipe or pole, two customer-provided stainless steel clamps, and hand tools to tighten the clamps
- Screwdriver with assorted bits

Optional hardware and tools:

- Customer-supplied small padlock with a 3.5mm (0.14") or smaller shackle diameter, used to fasten the AP to the secure mounting bracket

MOUNTING THE SECURE BRACKET AND AP

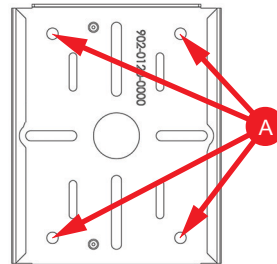
- If you are mounting the AP on a flat surface, then you will also need an electric drill with a 4.75mm (3/16") drill bit, and the four No. 6 zinc plated screws and plastic wall anchors included with the kit.
- If you are mounting the AP on a truss or pole, then you will also need two customer-provided pipe clamps.

Continue with the following:

- 1 If you are mounting the AP on a flat surface, then use the secure mounting bracket as a template to mark the locations for four drill holes on the mounting surface. There are four screw holes available on the secure mounting bracket.

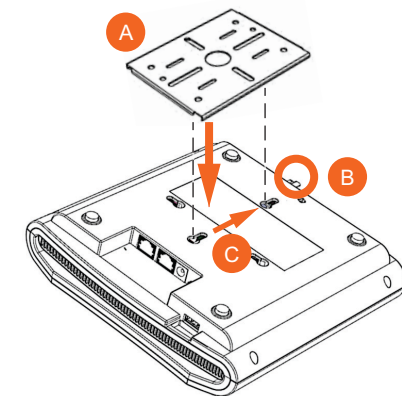
Fasten the bracket to the flat surface using four mounting screws and plastic wall anchors and continue with [Step 3](#).

Figure 2: Secure bracket mounting holes



- 2 If you are mounting the AP on a pipe or pole, then feed the two customer-provided stainless steel clamps through the slots on the secure mounting bracket. Use common hand tools to tighten the clamps around the pipe or pole. After the bracket is attached, continue with [Step 3](#).
 - 3 Insert the two studs on the secure mounting bracket into the keyholes on the bottom of the AP, as shown in [Figure 3](#). This figure shows the R710 AP: Position the studs on the front of the bracket in the keyholes on the R710 AP (A), slide the AP toward the Ethernet ports until the AP retainer tab (B) snaps into place, trapping the bracket studs in the keyholes (C).
- Note:** There is a second set of keyholes that are for optional sideways mounting on a flat surface. Physical security is not supported when mounting the AP with this set of keyholes.

Figure 3: Attaching the AP to the mounting bracket



- 4 (Optional) Attach a customer-supplied padlock through the integral AP retainer tab (B in [Figure 3](#)) to fasten the AP to the secure mounting bracket studs.

Removing the AP from the secure mounting bracket:

- 1 If the AP is locked to the secure mounting bracket, then remove the lock.
 - 2 Gently push and hold the AP retainer tab (B in [Figure 3](#)) to the side to release the secure mounting bracket.
 - 3 While holding the AP retainer tab to the side, slide the AP away from the Ethernet ports on the bottom of the AP.
- Congratulations! You have mounted your secure bracket and your Ruckus Wireless AP.